

CAMISOLES			
203838	ALLURE	\$155	P.6
203861	APPEAL	\$145	P.2
203831	PRODIGY	\$155	P.10

T- SHIRTS			
204816	BURST	\$150	P.14
204872	CELEBRATION	\$175	P.2
204836	COLA	\$115	P.2
204834	CREST	\$115	P.2
204838	CRUSH	\$115	P.2
204803	EBONY	\$115	P.10
204800	MERLOT	\$115	P.10
204833	SABLE	\$125	P.6
204823	SOLAR	\$115	P.14
204840	SOLSTICE	\$115	P.2
204843	VALIANT	\$115	P.14
204806	VISAGE	\$140	P.10

JACKETS			
205863	ACADEMY	\$275	P.2
205830	BUOYANT	\$285	P.10
205824	CARMINE	\$285	P.10
205847	EYELASH	\$275	P.6
205869	NATURAL	\$295	P.2
205859	ORANGE	\$275	P.2
205823	ROSETTE	\$265	P.10
205849	SUNSHINE	\$265	P.14

PANTS			
209837	ARIES	\$195	P.6
209856	ASPHALT	\$170	P.14
209830	BUOYANT	\$180	P.10
209866	DARLING	\$180	P.14

209870	GLEAM	\$155	P.10
209846	MELINDA	\$180	P.6
209869	NATURAL	\$195	P.2
209835	SEERSUCKER	\$155	P.6
209860	SPECTATOR	\$170	P.2
209850	STRIKING	\$195	P.14
209833	WINSOME	\$145	P.10

KNITS			
210826	AWAKE	\$145	P.14
210811	BERRY	\$175	P.6
210812	BERRY	\$140	P.6
210828	CANARY	\$145	P.14
210830	CAVIAR	\$145	P.14
210807	DOWNY	\$165	P.10
210810	EUPHORIC	\$175	P.6
210817	MASQUERADE	\$155	P.6
210827	POSITIVE	\$175	P.14
210845	SALTWATER	\$145	P.2
210814	SUMMERGREEN	\$125	P.6
210829	WEEKENDER	\$165	P.2
210820	WHISPER	\$185	P.6

BLOUSES			
212834	BLAZE	\$175	P.10
212874	CARLO	\$150	P.14
212854	CAVALIER	\$195	P.14
212864	CINEMA	\$185	P.14
212840	FLOURISH	\$175	P.6
212832	LUNA	\$195	P.10
212826	NIRVANA	\$175	P.10
212821	OBSDIAN	\$175	P.10
212818	PARADISE	\$150	P.2
212851	SORORITY	\$195	P.14

212843	TOGA	\$150	P.6
212845	VERVE	\$175	P.6

SKIRTS			
214863	ACADEMY	\$165	P.2
214852	ASTAIRE	\$175	P.14
214862	BATIK	\$155	P.2
214824	CARMINE	\$165	P.10
214819	CARNIVAL	\$135	P.14
214828	CHARISMA	\$175	P.10
214841	EMBASSY	\$165	P.6
214842	ESCAPE	\$175	P.6
214847	EYELASH	\$165	P.6
214869	NATURAL	\$165	P.2
214822	NIKITA	\$165	P.10
214855	PSYCHEDELIC	\$165	P.2
214839	SOPHISTICATED	\$175	P.14
214865	SUMATRA	\$165	P.2
214827	TROPICAL	\$165	P.10

DRESSES			
215829	AMBASSADOR	\$295	P.10
215848	ANISETTE	\$250	P.6
215836	DAZZLE	\$225	P.10
215858	DREAMER	\$195	P.14
215844	HERITAGE	\$235	P.14
215839	ROMANTIC	\$195	P.6
215868	VINTAGE	\$275	P.2

SCARVES			
217817	MYSTIC	\$165	P.14



3

205869 **NATURAL** \$295
linen/cotton/polyester/viscose/
elastane 4 | 8 | 6/14 | 12



6

204836 **COLA** \$115
rayon/spandex
S | M | L | X/S



9

205859 **ORANGE** \$275
linen
6/14 | 10 | 2 | 4



12

204872 **CELEBRATION** \$175
silk
M | S | XL | L | S



15

212818 **PARADISE** \$150
silk
8 | 4 | 6 | 10



18

205863 **ACADEMY** \$275
cotton/linen/polyamide
8 | 4 | 12 | 6/14



4

204834 **CREST** \$115
rayon/spandex
M | S | L | X/S | M



10

204838 **CRUSH** \$115
rayon/spandex
L/X/S | S | M | S



7

214869 **NATURAL** \$165
linen/cotton/polyester/viscose/
elastane 4 | 8 | 6/14 | 12



13

210845 **SALTWATER** \$145
viscose/cotton
L | S | M | S



16

203861 **APPEAL** \$145
modal/elastane
2 | 8 | 4 | 6



19

204840 **SOLSTICE** \$115
rayon/spandex
S | M | M | S

1

215868 **VINTAGE** \$275
cotton/spandex
2 | 8 | 6 | 4



5

209869 **NATURAL** \$195
linen/cotton/polyester/viscose/
elastane 2 | 8 | 6/14 | 10
Ⓟ Ⓛ



8

214862 **BATIK** \$155
cotton/spandex
6 | 2 | 10 | 4



11

214865 **SUMATRA** \$165
cotton/ramie/rayon
4 | 10 | 2 | 6



14

214855 **PSYCHEDELIC** \$165
linen
6 | 8 | 4 | 2



17

209860 **SPECTATOR** \$170
cotton/elastane
4 | 8 | 12 | 2/14
Ⓟ Ⓜ



20

214863 **ACADEMY** \$165
cotton/linen/polyamide
8 | 4 | 12 | 6/14



2

210829 **WEEKENDER** \$165
cotton/linen
S | L | M | S | XL

205869
NATURAL

SIENNA-WHITE / Stretch linen tech jacket. Regular fit. Shaped with side front waist seams and princess seams. Single-breasted, four-button closure, portrait neckline with convertible collar, long sleeves, optional turnback deep-banded cuffs. Bevel-edged button-flaps at chest, welt pockets at hip. Saddlestitch detailing at collar, placket, pocket welts, shape seams and cuffs. Brown leather belt. Mini leopard print stretch lining. Length: 22-1/2". Sizes O-16.

30% linen, 27% cotton, 27% polyester, 14% viscose, 2% elastane

204836
COLA

SIENNA / Lightweight jersey t-shirt with twist detail. Subtly creped stretch knit. Regular fit. Scooped neckline, cap sleeves. Raglan seams angle to meet twist detail at front neckline. Turnback finish at neckline, sleeves and hem. Sizes XS-XL.

96% rayon, 4% spandex

205859
ORANGE

WASHED ORANGE CRUSH / Linen jacket. Easy fit. Shaped with side seams, back yoke and center back seam. Double-breasted, three rows of buttons with bartack detail, deep convertible collar to wear open or as a tall stand with hidden button closure, 3/4 sleeves, deeply faced button-tabbed turnback cuffs, button-tab detail at back waist. Large button-tab cargo hip pockets with soft tucks. Back yoke with striped Khaki/White cotton facing and bias binding. Bound buttonholes. Unlined. Length: 19". Sizes O-16.

100% linen

204872
CELEBRATION

SALT WATER-ORANGE CRUSH-SIENNA-IVORY-LAVENDER-PURPLE / Leopard floral print jersey t-shirt. Silk knit. Regular fit. Shaped with center front kissing seams. Wide V-neckline, sleeveless with printed crinkle silk chiffon ruffle trim and racer back. Side zipper. Self-bias piping at neckline, center front seam and armholes. Pearl merrow finish at ruffles. Sizes XS-XL.

100% silk

212818
PARADISE

SUNSHINE-PURPLE-TURQUOISE-SOFT WHITE / Large bloom print silk chiffon blouse. Regular fit. Shaped with ruched front bib tapers from shoulders to waist, back darts and center back seam. Jewel neckline, back keyhole with looped-button closure, side zipper, sleeveless. Side slits. Bib framed with wide cascading ruffle on left side, narrow gathered ruffle on right. Pearl merrow edging at ruffles. Dyed-to-match Soft Aqua poly georgette lining. Self-covered button. Sizes O-16.

100% silk

205863
ACADEMY

SALT WATER-SOFT WHITE / Geometric houndstooth jacket. Regular fit. Shaped with princess seams and four soft back pleats from waist to hem. Single-breasted, single hook-and-bar closure at waist, jewel neckline with deep narrow V-slit, long sleeves. Soft pleats at back waist held with wide White grosgrain ribbon bow. White satin ribbon trim at neckline, front closure and hem. Dyed-to-match White acetate lining. Shoulder pads. Length: 19-1/2". Sizes O-16.

79% cotton, 12% linen, 9% polyamide

215868
VINTAGE

SIENNA-WHITE / Belted stretch cotton dress. Regular fit. Shaped with triangle-shaped panel from below bust to waist seam, four-panel skirt and center back seam above waist. V-neckline, sleeveless, flared skirt, hidden side zipper. Side seam pockets. Dyed-to-match Sienna faux patent belt with self-piping, belt loops. Dyed-to-match Sienna cotton voile lining only on top, front and back. Length: 23-1/2". Sizes O-16.

97% cotton, 3% spandex

204834
CREST

SOFT AQUA / Lightweight jersey t-shirt with twist detail. Subtly creped stretch knit. Regular fit. Scooped neckline, cap sleeves. Raglan seams angle to meet twist detail at front neckline. Turnback finish at neckline, sleeves and hem. Sizes XS-XL.

96% rayon, 4% spandex

214869
NATURAL

SIENNA-WHITE / Stretch tech flared skirt with flounced hem. Regular fit. Shaped with princess seams. Fits through hips, flares into multi-seamed flounce at hem. Contoured yoked waistband, side zipper, snap and hook-and-eye closure. Decorative button-flaps at waist yoke. High-gloss deep brown faux leather buttons. Dyed-to-match Sienna stretch lining. Length: 23". Sizes O-16.

30% linen, 27% cotton, 27% polyester, 14% viscose, 2% elastane

204838
CRUSH

ORANGE CRUSH / Lightweight jersey t-shirt with draped neckline. Stretch knit. Regular fit. Draped scooped neckline, sleeveless. Upper bodice ruches into angled seaming at the sides of neckline, creating soft draping. Self-facing at back neckline. Turnback finish at armholes and hem. Sizes XS-XL.

95% rayon, 5% spandex

210845
SALTWATER

SALT WATER / Fine-gauge jersey sweater with rosette trim. Lightweight subtly creped yarn. Regular fit. Scooped neckline, cap raglan sleeves. Inset rib and pointelle panel down center front. Chunky self-tubular knit rosettes embellish the front neckline to back raglan seams. Jersey tubular finish at neckline. Rib finish at sleeves and hem. Fully fashioned. Sizes XS-XL.

57% viscose, 43% cotton

203861
APPEAL

SIENNA-ORANGE-GERANIUM-WHITE-GREEN-PINK-BLUE-BLACK-YELLOW / Coral and floral print stretch jersey halter top. Regular fit. Shaped with ruched side, center front and center back seams. Cutaway styling with double ruffle that cascades from neckline to hem and wide ties that crisscross in front and tie in back. Side zipper. Dyed-to-match Ocean Blue knit jersey lining. Sizes O-16.

90% modal, 10% elastane

204840
SOLSTICE

SALT WATER / Lightweight jersey cami-styled t-shirt with self-banding detail. Stretch knit. Fitted. Curved V-neckline edged with self-binding, adjustable self-straps. Crisscrossed self-fabric strips run down princess lines from strap point to hem and across body at empire line and waist. Double-layered upper bodice. Topstitch detailing at side panels from empire seam to hem. Turnback finish at hem. Sizes XS-XL.

94% rayon, 6% spandex

210829
WEEKENDER

NATURAL / Heavy-gauge jersey bolero-styled cardigan. Chunky linen-blend yarn. Easy fit. Open styling, drop shoulders, below-elbow dolman sleeves with deep chunky cableknit trim that also curves from back neckline along placket to hem. Sizes XS-XL.

71% cotton, 29% linen

209869
NATURAL

SIENNA-WHITE / Stretch linen tech pant with deep cuff. Flat-front. Regular fit. Low waist. Straight-leg. Full length. Shaped with back yoke. Contoured waistband with notched-V in back and mini leopard print stretch facing, fly-front zipper, button closure, double belt loops shaped with tapered tips. Front button-flap patch pockets; back patch pockets, all with pintuck detailing. Unlined. Inseam: 34". Sizes O-16.

30% linen, 27% cotton, 27% polyester, 14% viscose, 2% elastane

214862
BATIK

SOFT AQUA-SIENNA-WHITE / Paintbrush batik print stretch cotton straight skirt. Regular fit. Shaped with frame across front waistband and down center front panel and back princess seams. Smooth waist, exposed silver front zippers run from waist-to-hip and mid-thigh-to-hem, snap and hook-and-eye closure. Coordinating geometric print at front frame, back waistband and center back panel. Dyed-to-match Aqua stretch lining. Length: 22". Sizes O-16.

97% cotton, 3% spandex

214865
SUMATRA

SOFT AQUA-ORANGE / Tropical floral print A-line skirt. Regular fit. Shaped with reverse front princess seams that curve toward center front and back darts. Contoured waistband, back zipper, snap and hook-and-eye closure. Deep front kick pleat. Dyed-to-match Orange Crush stretch lining. Length: 22". Sizes O-16.

48% cotton, 28% ramie, 24% rayon

214855
PSYCHEDELIC

SUNSHINE-ORANGE-SALT WATER-SUMMER GREEN / Cotton candy print linen full skirt. Regular fit. Shaped with front and back gathers. Contoured waistband with double rows of pintucks, side zipper, snap and hook-and-eye closure. Curved slash hip pockets with multi-needle topstitch-detailed band. Dyed-to-match cotton voile lining. Length: 22". Sizes O-16.

100% linen

209860
SPECTATOR

WHITE / Stretch cotton ankle pant. Flat-front. Regular fit. Modern waist. Slim-leg. Ankle length. Shaped with back darts. Contoured waistband, fly-front zipper, inside button, extended tab with hook-and-bar closure, side slits. Decorative vertical welt detailing at front; horizontal welt detailing at back. Lined. Inseam: 28". Sizes O-16.

95% cotton, 5% elastane

214863
ACADEMY

SALT WATER-SOFT WHITE / Geometric houndstooth straight skirt. Regular fit. Shaped with front and back darts. Smooth waist faced with satin acetate, side zipper, snap and hook-and-eye closure. Dyed-to-match White acetate lining. Length: 23-1/2". Sizes O-16.

79% cotton, 12% linen, 9% polyamide

F FITTED

R REGULAR FIT

E EASY FIT

H HIGH WAIST

C CLASSIC WAIST

R REGULAR WAIST

L LOW WAIST

M MODERN WAIST

U ULTRA LOW WAIST



21
210814 **SUMMERGREEN** \$125
rayon/nylon
S|S|L|XS|M



24
210811 **BERRY** \$175
rayon/cotton
S|S|L|M



27
210810 **EUPHORIC** \$175
rayon/nylon/spandex
S|M|M|S



30
212843 **TOGA** \$150
cotton/polyamide/elastane
4|2|8|6



33
212845 **VERVE** \$175
cotton/nylon/spandex
4|8|10|6



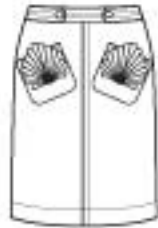
36
212840 **FLOURISH** \$175
silk
2|6|4|8



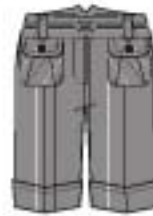
39
205847 **EYELASH** \$275
cotton/acrylic/nylon
6|8|0|10|4



22
214842 **ESCAPE** \$175
cotton
2|4|14|6|8



28
214841 **EMBASSY** \$165
linen
6|8|0|2|4



31
209835 **SEERSUCKER** \$155
polyester/cotton/spandex
8|4|10|6
Ⓜ Ⓢ



34
203838 **ALLURE** \$155
silk
8|4|6|2



37
204833 **SABLE** \$125
rayon/spandex
M|L|XS|M|S



40
214847 **EYELASH** \$165
cotton/acrylic/nylon
6|8|0|10|4



25
210812 **BERRY** \$140
rayon/cotton/nylon/spandex
M|L|XS|S|M



23
210820 **WHISPER** \$185
viscose/cotton/nylon
M|S|XL|L|M



29
215839 **ROMANTIC** \$195
cotton/silk
8|2|4|6



32
210817 **MASQUERADE** \$155
cotton
M|M|S|S



35
209846 **MELINDA** \$180
polyester
10|6|0|2|12
Ⓜ Ⓢ



38
215848 **ANISETTE** \$250
cotton
2|8|6|4



26
209837 **ARIES** \$195
linen/rayon/spandex
6|14|4|10|2
Ⓜ Ⓢ

210814
SUMMERGREEN

SUMMER GREEN / Fine-gauge fine ribknit sweater with hand-crocheted detail. Regular fit. Crew neckline with split-V placket, cap sleeves with hand-crocheted chunky openwork detail. Clean finish at neckline and hem. Fully fashioned. Sizes XS-XL.

82% rayon, 18% nylon

210811
BERRY

BERRY / Long fine-gauge jersey open-front cardigan. Lightweight creped yarn. Regular fit. Open styling, below-elbow sleeves. Fabric is cut to fold at back of neckline, curve into twist detail at sides of waist and continue into an asymmetrical hem created by separate knit panel attached at lower side seam. Jersey tubular finish at cuffs and hem. Falls to below hip. Fully fashioned. Sizes XS-XL. Creates twin set with BERRY 210812.

53% rayon, 47% cotton

210810
EUPHORIC

HOT PINK-PURPLE-GERANIUM / Fine-gauge jersey halter-styled ombre-printed sweater. Stretch yarn with subtle sheen. Fitted. Chunky gold necklace loops through keyhole in front and clasps in back. Hot Pink at upper bodice, Purple at waist, Geranium at hem. Built-in elasticized shelf bra. Sizes XS-XL.

84% rayon, 14% nylon, 2% spandex

212843
TOGA

WHITE / Sashed toga-styled shirt. Easy fit. Shaped with elasticized ruching at neckline and two tucks at waist. Bateau neckline, side zipper, pullover styling, extended shoulders create cap sleeves, deep armholes notch into a V. Extra-wide sash long double wrap scrunches through small loops in back. Deep self-band at hem. Side slits. Sizes 0-16.

75% cotton, 20% polyamide, 5% elastane

212845
VERVE

BLACK-WHITE / Bottle print stretch tunic. Easy fit. Shaped with soft pleats above waist seam, side panels, back yoke and center back box pleat. Shirt collar with stand, five-button placket, pullover styling, 3/4 sleeves, two-button French cuffs turned back. Smocked patch at center front waist extends into a self sash designed to tie at left front. Shirrtail hem shorter in front, longer in back. Smoke mother-of-pearl four-hole buttons. Sizes 0-16.

66% cotton, 31% nylon, 3% spandex

212840
FLOURISH

BLACK-WHITE-HOT PINK-AMBROSIA-SUMMER GREEN-PURPLE / Abstract dot print silk chiffon tux-pleated blouse. Regular fit. Shaped with bust darts, back yoke and center back kissing pleat. Peter pan collar with stand, button-front placket, above-elbow sleeves with gathered shoulders and narrow self-banded looped-button cuffs. Self-spaghetti strap tie belt, thread loops. Five tuxedo-styled pleats at each side of placket. Smoke mother-of-pearl two-hole buttons. Sizes 0-16.

100% silk

205847
EYELASH

BLACK / Summer eyelash tweed peplum jacket. Solid novelty textured yarn. Regular fit. Shaped with princess seams, front and back double-layered bias-cut peplum and center back seam. Single-breasted, four-button closure, notched collar, cap sleeves. Button-flap patch chest pockets with box pleat detail. Pearl merrow finish at peplum and pocket flaps. Dyed-to-match stretch lining. Shoulder pads. Length: 23-1/2". Sizes 0-16.

52% cotton, 27% acrylic, 21% nylon

214842
ESCAPE

SIENNA-SALTWATER-SOFT AQUA-SUMMER GREEN / Embroidered cotton lawn straight skirt. Regular fit. Shaped with deep hip yoke and side seams. Contoured yoked waistband framed with geometric-patterned embroidery, side zipper, snap and hook-and-eye closure. Embroidered from waist to hem in alternating rows of Saltwater, Soft Aqua and Summer Green geometrics and scallops. Dyed-to-match Sienna cotton voile lining. Length: 22". Sizes 0-16.

100% cotton

210812
BERRY

BERRY / Fine-gauge jersey sleeveless sweater with twist detail. Lightweight stretch creped yarn. Regular fit. Front gathers into twist at tip of V-neckline. Bodice seams angle to side seams at waist. Clean, self-rolled edge at front neckline. Jersey tubular finish at back neckline, armholes and hem. Fully fashioned. Sizes XS-XL. Creates twin set with BERRY 210811.

40% rayon, 36% cotton, 21% nylon, 3% spandex

214841
EMBASSY

WHITE / Embroidered linen A-line skirt. Regular fit. Shaped with center front and back seams and back darts. Contoured waistband with button-tabs, back zipper, snap and hook-and-eye closure. Angled patch pockets with scallop shell embroidery detail. White two-hole buttons with oversized buttonholes. Dyed-to-match cotton voile lining. Length: 20". Sizes 0-16.

100% linen

209835
SEERSUCKER

BLACK-WHITE / Striped seersucker belted short. Flat-front. Regular fit. Low rise. Straight-leg. Short length. Shaped with back yoke. Contoured waistband with notched-V in back, fly-front zipper, button closure. Separate Black faux patent contoured belt, double belt loops shaped with tapered tips. Front button-flap patch pockets with side entry, back patch pockets. Unlined. Inseam: 10". Sizes 0-16.

53% polyester, 43% cotton, 4% spandex

203838
ALLURE

WHITE-SIENNA-BERRY-SUNSHINE-SUMMER GREEN / Abstract dot print crinkle silk chiffon halter top. Regular fit. Shaped with crisscross styling in front and elastic at top edge in back. Double-layers attach at neckline and fall loose to hem, top front layer crisscrosses over V-neckline and ties in back. Pullover styling. Baby hem finish at hem. Unlined. Sizes 0-16.

100% silk

204833
SABLE

BLACK with IVORY / Lightweight jersey t-shirt with silk trim. Stretch rayon knit. Regular fit. Deep scooped neckline front and back, sleeveless. Black/Ivory striped silk trim at neckline finishing in pleat detail with striped silk bow in back. Turnback finish at armholes and hem. Sizes XS-XL.

96% rayon, 4% spandex
Trim: 100% silk

214847
EYELASH

BLACK / Summer eyelash tweed straight skirt with flounced hem. Solid novelty textured yarn. Regular fit. Shaped with front and back princess seams. Contoured waistband, back zipper, snap and hook-and-eye closure. Pearl merrow edged double-tiered flounce at front sides and back hem. Dyed-to-match stretch lining. Length: 22-1/2". Sizes 0-16.

52% cotton, 27% acrylic, 21% nylon

210820
WHISPER

WHITE / Fine-gauge jersey cardigan with appliqué trim. Regular fit. Jewel neckline, ten-snap placket trimmed with dyed-to-match grosgrain ribbon, 3/4 sleeves. Front 'striped' with a variety of dyed-to-match appliqués including openwork accents. Ribbed tubular finish at neckline. Deep rib trim at cuffs and hem. Chunky gold snaps. Fully fashioned. Sizes XS-XL.

50% viscose, 40% cotton, 10% nylon

209837
ARIES

BERRY-DOVE / Stippled paisley print pant. Flat-front. Regular fit. Modern waist. Straight-leg. Full length. Shaped with darts. Smooth waist with tapered self-tab detail, side zipper, snap and hook-and-bar closure. Slash pockets in front, decorative besoms in back. Unlined. Inseam: 33". Sizes 0-16.

54% linen, 43% rayon, 3% spandex

215839
ROMANTIC

BERRY / Cotton lawn shift dress. Regular fit. Shaped with bust and back darts. Squared neckline, cap raglan sleeves, silk charmeuse banded cuffs, A-line skirt, hidden side zipper, hook-and-eye closure. Knotted macramé 'necklace' loops through five silk charmeuse tabs at front neckline finishing with strands of macramé suspended from a silk charmeuse ruched band. Dyed-to-match cotton voile lining. Length: 21". Sizes 0-16.

68% cotton, 32% silk

210817
MASQUERADE

BLACK / Medium-gauge jersey cardigan with crochet trim. Crisp mercerized cotton in a loose, airy knit. Regular fit. Wide ottoman-stitched foldover collar drapes in front to below the hem, open styling, below-elbow sleeves. Chunky hand-crocheted novelty finish at draped collar. Rib finish at cuffs and hem. Fully fashioned. Sizes XS-XL.

100% cotton

209846
MELINDA

BERRY-DOVE / Wrinkle-free poly pant. Flat-front. Regular fit. Modern waist. Straight-leg. Full length. Shaped with front leg seams and back darts. Smooth waist with tapered self-tab detail, side zipper, snap and hook-and-bar closure. Slash pockets in front, decorative besoms in back. Unlined. Inseam: 33". Sizes 0-16.

100% polyester

215848
ANISETTE

BLACK / Cotton lace shift dress. Regular fit. Shaped with bust darts and bib yoke. Jewel neckline, short sleeves with one-button cuffs, A-line skirt, half-placket ruffle-framed bib with decorative looped-button closures. Cotton voile pintucking at bib, ruffles and sleeves. Crochet dot pattern at hem. Dyed-to-match cotton voile lining. Black ball buttons. Length: 21". Sizes 0-16.

100% cotton

F FITTED

R REGULAR FIT

E EASY FIT

H HIGH WAIST

C CLASSIC WAIST

R REGULAR WAIST

L LOW WAIST

M MODERN WAIST

U ULTRA LOW WAIST



41

204803 **EBONY** \$115
rayon/cotton/spandex
S|M|S|M



44

205830 **BUOYANT** \$285
linen/viscose
8|6|0|10|4



47

212834 **BLAZE** \$175
cotton/silk
4|6|2|8



50

205824 **CARMINE** \$285
polyester/cotton/acrylic
10|2|4|8|0



53

203831 **PRODIGY** \$155
silk
4|6|2|8



56

212832 **LUNA** \$195
cotton
10|4|8|6



59

212826 **NIRVANA** \$175
cotton/polyamide/elastane
6|8|10|4



42

214828 **CHARISMA** \$175
cotton
8|0|12|4|6



45

214822 **NIKITA** \$165
linen
4|14|2|8|6



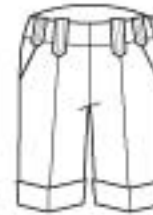
48

205823 **ROSETTE** \$265
cotton/spandex
12|6|8|10



51

204800 **MERLOT** \$115
rayon/spandex
S/XL|M|S|M



54

209833 **WINSOME** \$145
cotton
2|10|6|8|0
®



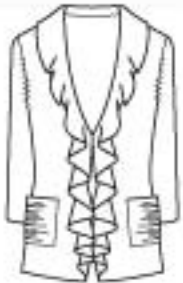
57

204806 **VISAGE** \$140
rayon/elastane
S|L|S/XL|M



60

214827 **TROPICAL** \$165
cotton
2|4|6|8



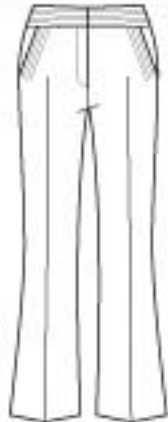
43

210807 **DOWNY** \$165
cotton/viscose
L|M|S/XL|S



46

212821 **OBSIDIAN** \$175
silk
6|8|2|4



49

209830 **BUOYANT** \$180
linen/viscose
6|8|10|0|4
®



52

214824 **CARMINE** \$165
polyester/cotton/acrylic
10|2|4|8|0



55

215836 **DAZZLE** \$225
silk/cotton/spandex
4|6|8|2



58

209870 **GLEAM** \$155
linen
4|6|0|8|10
®



61

215829 **AMBASSADOR** \$295
cotton
8|2|4|6

**204803
EBONY**

BLACK / Lightweight jersey cami-styled t-shirt with ruched off-shoulder band. Stretch knit. Regular fit. Scooped cami neckline, narrow self-straps. Wide shoulder band is ruched at sides and center back and gathered through a center front loop, attaching to the cami at center front and center back only. Turnback finish at hem. Built-in shelf bra. Sizes XS-XL.

67% rayon, 28% cotton,
5% spandex

**205830
BUOYANT**

WHITE / Linen/viscose twill blazer. Regular fit. Shaped with front and neck darts, princess seams and center back seam. Single-breasted, one-button closure, notched collar with peaked lapels, 3/4 sleeves, three-button cuffs. Welt pocket at chest, flap-besom pockets at hip. Separate long Black/Ivory variegated stripe silk scarf threads through deep inside slit at left lapel seam. Dyed-to-match acetate lining. Shoulder pads. Length: 21-1/2". Sizes 0-16.

60% linen, 40% viscose

**212834
BLAZE**

CHERRY RED / Silk cotton lawn tunic with silk charmeuse trim. Easy fit. Shaped with back darts and adjustable hem. Ballet neckline with split-V, pullover styling, extended shoulder seams creates cap dolman sleeves. Notched dyed-to-match silk charmeuse band. Adjustable hem created by self-spaghetti straps tunneled through side. Four shiny nickel cord tips. Sizes 0-16.

68% cotton, 32% silk

**205824
CARMINE**

CLASSIC RED-WHITE-BLACK / Mini-dot jacquard jacket. Regular fit. Shaped with six front and eight back panels that release into shallow tucks from waist to hem. Single-breasted, three-button closure, portrait neckline with notched collar, 3/4 sleeves with vented three-button-detailed cuffs. Dyed-to-match Red acetate lining. Length: 22-1/2". Sizes 0-16.

46% polyester, 41% cotton,
13% acrylic

**203831
PRODIGY**

ORANGE-KERMIT-WHITE-SUMMER GREEN-YELLOW-PURPLE / Tropical paisley print washed silk habutai one-shoulder top. Regular fit. Shaped with bias-cut fabric and back darts. Soft mini-tucks at left front shoulder, sleeveless. Angled hem, longer on right side. Pullover styling. Dyed-to-match Orange silk habutai lining. Sizes 0-16.

100% silk

**212832
LUNA**

WHITE / Floral-patterned cotton jacquard tunic. Easy fit. Shaped with back darts and center back seam. Jewel neckline, half-placket with three functional and four decorative buttons, pullover styling, 3/4 sleeves. Gathered textured pinstriped ruffles at placket and double-tiered cuffs. Cotton lace edging at ruffles, placket, neckline and hem. Two wide rows of White lace from shoulders to hem. White rayon knot buttons. Sizes 0-16.

100% cotton

**212826
NIRVANA**

WHITE / Stretch shirt with two belt options. Regular fit. Shaped with princess seams, side panels and center back seam. High portrait-styled shawl collar with ruching detail, four-button closure angles from neckline to hem, 3/4 sleeves with shoulder darts and one-button banded cuffs. Shipped with tie-belt on shirt and separate Black faux patent belt with White piping, belt loops. White cup-shaped rimless buttons. Sizes 0-16.

75% cotton, 20% polyamide,
5% elastane

**214828
CHARISMA**

BLACK-CHINO-IVORY-SAGE GREEN / Appliquéd and embroidered batik print cotton voile A-line skirt. Regular fit. Shaped with deep hip yoke and side seams. Solid 'washed Black' deeply yoked waistband, side zipper, snap and hook-and-eye closure. Spaghetti tie belt with wood bead cord ends, belt loops. Tropical floral batik print appliquéd allover with frayed-edged solid washed Black flowers and leaves. Dyed-to-match Chino cotton voile lining. Length: 20". Sizes 0-16.

100% cotton

**214822
NIKITA**

BLACK / Cutout-embroidered A-line skirt. Regular fit. Shaped with soft gathers at sides, smooth at center. Contoured waistband with cutout-embroidery front and back, back zipper, snap and hook-and-eye closure. Art deco sunburst motif backed with sheer organza. Dyed-to-match cotton voile lining. Length: 22". Sizes 0-16.

100% linen.

**205823
ROSETTE**

WHITE-CLASSIC RED-BLACK-GREEN / Floral stretch cotton sateen jacket. Oversized engineered print. Regular fit. Shaped with deeply angled front darts, hip darts and center back seam. Single-breasted, hidden snap-front closure to top of stand collar, cap dolman sleeves with angled turnback cuffs. Angled welt onseam pockets at angled front darts. Dyed-to-match White stretch lining. Self-covered snaps. Length: 21". Sizes 0-16.

97% cotton, 3% spandex

**204800
MERLOT**

CLASSIC RED / Lightweight jersey t-shirt with ruching detail. Double-layered stretch knit. Fitted. Deep U-neckline raised to hug neckline in back, sleeveless. Ruching detail at front shoulders, center back of neckline and at side seams creating a curved hem. Clean-finished at neckline, armholes and hem. Sizes XS-XL.

96% rayon, 4% spandex

**209833
WINSOME**

WHITE / Textured cotton short with deep cuff. Flat-front. Regular fit. Modern waist. Tapered-leg. Short length. Shaped with front leg seams and back darts. Smooth waist with tapered self-tab detail, side zipper, snap and hook-and-bar closure. Slash pockets in front, decorative besoms in back. Unlined. Inseam: 11-1/2". Sizes 0-16.

100% cotton

**204806
VISAGE**

WHITE / Lightweight jersey t-shirt with bead and sequin trim. Subtly sapead stretch knit. Regular fit. Jewel neckline with round keyhole at center front, back keyhole with small-brushed gold looped-button closure, sleeveless. Neckline and upper bodice trimmed in gold and brass beads edged with matte gold sequins. Self-binding at armholes. Turnback finish at hem. Sizes XS-XL.

94% rayon, 6% elastane

**214827
TROPICAL**

WHITE-SUNSHINE-LEAF-LIGHT PINK / Floral border print cotton lawn full skirt. Regular fit. Shaped with box pleats stitched-down through the hips. Narrow contoured waistband, side zipper, snap and hook-and-eye closure. Side seam pockets. Engineered floral/leaf print with wide water colored stripe border at hem. Dyed-to-match White acetate lining. Length: 22". Sizes 0-16.

100% cotton

**210807
DOWNY**

WHITE / Fine-gauge jersey cardigan with ruffle trim. Crisp cotton/viscose yarn. Regular fit. V-neckline with fully fashioned shawl collar that cascades down placket to hem, two dyed-to-match corded hook-and-eye closures at waist, 3/4 sleeves. Ruched patch pockets at lower side seams. Ruched waist seam at back panel, rolled jersey finish at collar, cuffs and hem. Falls below hip. Fully fashioned. Sizes XS-XL

54% cotton, 46% viscose

**212821
OBSIDIAN**

BLACK / Silk crepe-de-chine blouse. Regular fit. Shaped with front shoulder yoke, four soft pleats at front neckline and back darts. Banded ballet neckline, back keyhole with three-button closure, pullover styling, gathered eyelash-length flutter sleeves. Wide neckband and shoulder yokes formed by rows of self-spaghetti straps centered with knot detail. Side slits. Smoke mother-of-pearl buttons. Sizes 0-16.

100% silk

**209830
BUOYANT**

WHITE / Linen/viscose twill pant. Flat-front. Regular fit. Regular waist. Flared boot-cut. Full length. Shaped with back yoke. Contoured waistband, fly-front zipper, inside button, hook-and-bar closure. Slash pockets. Dyed-to-match acetate lining. Inseam: 34". Sizes 0-16.

60% linen, 40% viscose

**214824
CARMINE**

CLASSIC RED-WHITE-BLACK / Mini-dot jacquard straight skirt. Regular fit. Shaped with back princess seams. Contoured waistband with curved front seam detail and tabs that extend around to back waist, side zipper, snap and hook-and-eye closure. Decorative back pocket welts. Double back vents. Dyed-to-match translucent Red two-hole buttons at back tabs. Dyed-to-match Red acetate lining. Length: 22". Sizes 0-16.

46% polyester, 41% cotton,
13% acrylic

**215836
DAZZLE**

CLASSIC RED-GOLD-BLACK-IVORY / Animal print stretch sleeveless sheath. Regular fit. Shaped with princess seams at front bodice, wide waistband and skirt. Deep V-neckline with sweetheart-shaped tip, center front panels extend to create wide shoulder straps, straight skirt, hidden back zipper, hook-and-eye closure. Back vent. Dyed-to-match Classic Red poly georgette lining. Length: 25". Sizes 0-16.

50% silk, 45% cotton, 5% spandex

**209870
GLEAM**

GOLD-FLAX / Garment-washed metallic linen short. Flat-front. Regular fit. Regular waist. Straight-leg. Short length. Shaped with back darts. Yoked waistband, fly-front zipper, inside button, double hook-and-bar closures, double belt loops. Front slash pockets. Garment-washed for softness. Unlined. Inseam: 10". Sizes 0-16.

100% linen

**215829
AMBASSADOR**

WHITE / Embroidered eyelet cotton trench-styled dress. Regular fit. Shaped with princess seams and center back seam. Curved V-neckline with convertible collar and cascading ruffled lapels, sleeveless, A-line skirt, three rows of double-breasted buttons. Angled welt pockets at hips. Self sash with buckle, belt loops. Deep inverted pleat at back hem. High-polished White faux horn buckle with four-hole buttons. White cotton voile lining. Length: 23-1/2". Sizes 0-16.

100% cotton

F FITTED

R REGULAR FIT

E EASY FIT

H HIGH WAIST

C CLASSIC WAIST

R REGULAR WAIST

L LOW WAIST

M MODERN WAIST

U ULTRA LOW WAIST



212851 **62** **SORORITY** \$195
silk
4 | 12 | 6 | 8



205849 **65** **SUNSHINE** \$265
cotton/polyester/elastane
2 | 4 | 14 | 8 | 6



210828 **68** **CANARY** \$145
cotton/polyester
M | S | M | L | XS



212854 **71** **CAVALIER** \$195
linen
8 | 10 | 6 | 8



210830 **74** **CAVIAR** \$145
viscose/polyester
L | XS | M | S | M



212874 **77** **CARLO** \$150
silk/metallic/nylon
6 | 8 | 4 | 2



215844 **80** **HERITAGE** \$235
linen/polyester/polyamide
6 | 4 | 8 | 2



204816 **63** **BURST** \$150
polyester/elastane
L | M | S | S | XL



204823 **66** **SOLAR** \$115
rayon/spandex
M | S | M | L



214819 **69** **CARNIVAL** \$135
cotton/spandex
2 | 6 | 8 | 0 | 10



210827 **72** **POSITIVE** \$175
cotton
S | XL | M | S | L



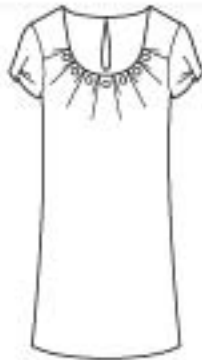
204843 **75** **VALIANT** \$115
rayon/spandex
M | S | S | M



210826 **78** **AWAKE** \$145
rayon/polyester
M | S | M | S



212864 **81** **CINEMA** \$185
cotton/spandex
8 | 6 | 4 | 10



215858 **64** **DREAMER** \$195
cotton/elastane
4 | 6 | 2 | 8



209850 **67** **STRIKING** \$195
viscose/mohair/wool/polyester
10 | 0 | 2 | 4 | 6
® ®



217817 **70** **MYSTIC** \$165
silk
ONE SIZE FITS ALL



209856 **73** **ASPHALT** \$170
cotton/spandex
12 | 2 | 14 | 8 | 10
® ®



214839 **76** **SOPHISTICATED** \$175
cotton
S | L | M | M | S



214852 **79** **ASTAIRE** \$175
linen/cotton
8 | 0 | 6 | 4 | 2



209866 **82** **DARLING** \$180
cotton/spandex
8 | 0 | 12 | 4 | 6
® ®

212851
SORORITY

SUNSHINE-BLACK-WHITE-BROWN / Ruffled safari print silk chiffon blouson. Regular fit. Shaped with elasticized waist and side seams. V-neckline with ruffle-trimmed stand collar, button-front half-placket to waist framed with gathered ruffles. 3/4 sleeves with darts at shoulder and double ruffle from tip of darts to above cuffs. Decorative spaghetti strap tie at waist creates illusion of a drawstring closure. Placket ruffles edged with narrow baby hem. Antique brass filigree half-ball buttons. Sizes 0-16.

100% silk

204816
BURST

SUNSHINE-AQUA-SIENNA-WHITE-GOLD-GREEN / Kaleidoscope print jersey t-shirt. Stretch knit. Regular fit. Scooped neckline with keyhole front cinched with self-band. 3/4 sleeves. Double-needle coverstitch detailing at cuffs and hem. Built-in shelf bra. Sizes XS-XL.

92% polyester, 8% elastane

215858
DREAMER

WHITE / Stretch cotton dress. Regular fit. Shaped with angled soft pleats at front neckline, side-shaped waist that flares into an A-line hem. Scooped neckline with decorative silver button detail, short sleeves with horizontal tuck and vertical box pleat detail, back keyhole with looped button closure. Large silver tack decorative buttons, White rivershell button at back keyhole. Dyed-to-match stretch lining. Length: 21". Sizes 0-16.

97% cotton, 3% elastane

205849
SUNSHINE

WASHED SUNSHINE / Ruffled garment-washed denim jacket. Regular fit. Shaped with front shoulder panels, back princess seams and center back yoke. Single-breasted, three-button closure, stand collar with gathered ruffle that extends along right side of placket to hem, 3/4 sleeves with self-banded cuffs. Vertical welt pockets at center front princess seams. Bound buttonholes. Unlined. Length: 22-1/2". Sizes 0-16.

82% cotton, 17% polyester, 1% elastane

204823
SOLAR

SUNSHINE / Lightweight jersey t-shirt with reversible draped neckline. Stretch knit. Regular fit. Scooped neckline with softly draped cowl on one side, boatneck on the other, wear either in front. Sleeveless. Self-binding at armholes. Turnback finish at hem. Sizes XS-XL.

96% rayon, 4% spandex

209850
STRIKING

SUNSHINE-BLACK-WHITE / Striped sharkskin belted pant. Flat-front. Regular fit. Regular waist. Straight-leg. Full length. Shaped with back darts. Contoured waistband faced with dyed-to-match Grey satin acetate, fly-front zipper, inside button. Straight sunshine yellow faux leather belt with faux leather buckle, belt loops. Front slash pockets with button closures. Dyed-to-match Grey acetate lining. Inseam: 26". Sizes 0-16.

77% viscose, 9% mohair, 9% wool, 5% polyester

210828
CANARY

SUNSHINE / Fine-gauge jersey sweater with ruffle trim. Regular fit. Jewel neckline, 3/4 sleeves with subtle ruching at shoulders and fine ribknit ruffles at cuffs. Small decorative patch pockets above hem. Tubular finish at neckline. Jersey tubular finish at hem. Fully fashioned. Sizes XS-XL.

72% cotton, 28% polyester

214819
CARNIVAL

SUNSHINE-SOFT AQUA-ORANGE-WHITE-BLACK-GREEN / Cityscape print stretch cotton A-line skirt. Regular fit. Shaped with princess seams. Deep yoked waistband with extended two-button tab, fly-front zipper with button closure. Chunky White/Black two-hole buttons. Heavy White topstitch detailing at yoke, fly and princess seams. Dyed-to-match White stretch lining. Length: 20". Sizes 0-16.

97% cotton, 3% spandex

217817
MYSTIC

ORANGE-SUNSHINE-WHITE-GREEN-SOFT WHITE / Paisley print silk dobby mesh scarf. 41" w x 70" l

100% silk

212854
CAVALIER

WHITE / Beaded linen tunic. Easy fit. Shaped with bust darts and front shoulder yokes. Sculpted horseshoe-shaped neckline, hidden side zipper, 3/4 sleeves with one-button cuffs, shirttail hem. Multicolored multi-needle topstitch-detailed band at neckline and cuffs. Faux tortoise and jade bead trim at neckline, antique copper trim at hem. Antique brass filigree half-ball buttons. Sizes 0-16.

100% linen

210827
POSITIVE

BLACK-WHITE / Hand-crocheted openwork graphic daisy-patterned sweater. Regular fit. Ballet neckline, 3/4 sleeves. Crocheted picot edging at neckline, cuffs and hem. Sizes XS-XL.

100% cotton

209856
ASPHALT

BLACK / Textured stretch cotton ankle pant. Flat-front. Regular fit. Modern waist. Slim-leg. Ankle length. Shaped with back darts. Contoured waistband, fly-front zipper, inside button, extended tab with hook-and-bar closure, side slits. Decorative vertical welt detailing at front; horizontal welt detailing at back. Unlined. Inseam: 28". Sizes 0-16.

95% cotton, 5% spandex

210830
CAVIAR

BLACK / Fine-gauge jersey sweater with silk georgette trim. Regular fit. Deeply scooped neckline with asymmetrical dyed-to-match silk georgette flower trim, sleeveless. Jersey tubular finish at neckline, armholes and hem. Fully fashioned. Sizes XS-XL. 72% viscose, 28% polyester Trim: 100% silk

204843
VALIANT

WHITE / Lightweight jersey camistyled t-shirt with self-banding detail. Stretch knit. Fitted. Curved-V cami neckline edged with self-binding, adjustable self-straps. Crisscrossed strips of self-fabric run down princess lines from strap point to hem and across body at empire line and waist. Double-layered at upper bodice. Turnback finish at hem. Sizes XS-XL.

94% rayon, 6% spandex

214839
SOPHISTICATED

BLACK with WHITE / Hand-crocheted Black straight skirt. Hand-appliqued with raised White stitches in a lattice pattern. Regular fit. Elasticized waist, pull-on styling. Slightly scalloped hem with White crochet and bobble-edge trim. Black poly/spandex knit lining. Length: 20 1/2". Sizes XS-XL

100% cotton

212874
CARLO

WHITE-GOLD-SILVER / Ruffled animal print chiffon blouse with metallic clip dots. Regular fit. Shaped with double row of front princess seams and single back princess seams. Gathered ruffle stand collar with ruffles at front and back of neckline, wide hidden button-front placket framed with narrow ruffles from neck to hem, sleeveless. Dyed-to-match White poly georgette lining. White mother-of-pearl four-hole buttons. Sizes 0-16.

90% silk, 6% metallic, 4% nylon

210826
AWAKE

WHITE / Fine-gauge fine ribknit retro styled sweater. Regular fit. Wide foldover banded collar extends to edge of shoulders, sleeveless. Body accented with three tiny raised horizontal 'stripes'. Clean finish at armholes and hem. Fully fashioned. Sizes XS-XL.

80% rayon, 20% polyester

214852
ASTAIRE

WHITE-GOLD / White linen/cotton pleated full skirt with gold metallic broken stripe border. Regular fit. Shaped with 20 front and back pleats stitched-down through hips and falling softly to hem. Smooth waist, side zipper, snap and hook-and-eye closure. Dyed-to-match White cotton voile lining. Length: 22-1/2". Sizes 0-16.

55% linen, 45% cotton

215844
HERITAGE

BRONZE-BLACK / Belted metallic linen dress. Regular fit. Shaped with princess seams and double-tucked triangle-shaped panel at front bodice. Squared neckline in front, V-neckline in back, sleeveless with narrow straps, flared skirt with inverted front pleat, back zipper, hook-and-eye closure. Adjustable self-belt with wrap closure, belt loops. Dyed-to-match Black acetate lining. Length: 24". Sizes 0-16.

73% linen, 17% polyester, 10% polyamide

212864
CINEMA

BLACK / Stretch cotton safari-styled wrap shirt. Regular fit. Shaped with gathers at front shoulders, darts and curved back yoke. Shirt collar with stand, V-neckline, 3/4 sleeves with wide self band. Self-banded snap-patch chest pockets with inverted pleats, self-banded patch hip pockets with double d-ring tabbed box pleats. Side slits. Tab with d-ring at back yoke. Shiny Black d-rings and tack buttons. Sizes 0-16.

96% cotton, 4% spandex

209866
DARLING

WHITE-CHINO-BLACK / Linked half circle print stretch cotton ankle pant. Flat-front. Regular fit. Modern waist. Slim-leg. Shaped with hook-and-bar closure, side slits. Decorative vertical welt detailing at front; horizontal welt detailing at back. Unlined. Inseam: 28". Sizes 0-16.

97% cotton, 3% spandex

- F FITTED
- R REGULAR FIT
- E EASY FIT

- H HIGH WAIST
- C CLASSIC WAIST
- R REGULAR WAIST
- L LOW WAIST
- M MODERN WAIST
- U ULTRA LOW WAIST